



TABLET INTERFERENCE ADVISOR SETUP FOR THE: ONA-800 AND CA5G

CONNECTIONS



SETUP

Phone Setup	Description
Band Forcing	Force the mobile to a band that you are NOT hunting interference on. Turn ON the mobile's Hot Spot

ONA-800

Setting Up Wi-Fi

Description


Connect the proper Bandpass Filter as shown above
Power On the ONA-800

System icon  System

Network icon  Network

WI-FI icon  WI-FI

Enable wireless adaptor Enable wireless adaptor
Select the Mobile Hot Spot **Mobile Hot Spot**

Enter the Password if needed 

Note the IP Address (xxx.xxx.xxx.xxx)

MAC address: 84:25:3F:69:C5:19

IP address: 192.168.43.185

Subnet mask: 255.255.255.0

Gateway: 192.168.43.1

DNS server: 192.168.43.1

Tablet Setup

Licensing

Connect the tablet to the same Mobile Hotspot network as above

Launch the EagleEye software 

Connecting the tablet to the CellAdvisor

Select the ONA-800 

Select Ethernet 

Enter the IP Address 

Press the Connect button

Press the GO button 

Zoom out on the map to the desired area (This will download the needed maps)

Setting up the Frequency

Press the  button
Press the Frequency tab
Set the Center Frequency (ex. 782 MHz for Band 13)
Set the Span (ex 12 MHz)
Press the Return tab 



Setting up Amp/Scale

Press the **Amp/Scale** tab
Set the Reference level (Ex. -90.00 dBm)
Set the Scale/Div (Ex 5dB)

NOTE – The above settings allows for a sensitive spectrogram (-90 to -140)

Set the Atten to 0 dB

Turn on the Preamp 

Press the Return tab 

Setting up BW/AVG

Press the **BW/AVG** tab

Set the RBW to 1 kHz 

Press the Return tab 




Turn on FAST sweep  (located in the Frequency Section)

Setting up the Measurement Mode

Press the **Tracking Mode** tab

Select the Mode (i.e. Channel Power for wideband noise, Peak Power for NB)

- ✓ * **Peak Power Mode** – the best tracking mode to address the most type of interference signal, especially for in-band interference to minimize user traffic into location estimation.
- ✓ **Channel Power Mode** – ideal for band clearance / spectrum clearance. Note this mode EagleEye location estimation engine uses Channel Power within specified channel bandwidth, you may need to make sure to minimize user traffic into location estimation.
- ✓ **RSSI Mode** – optimal tracking mode to track down a single, fixed frequency of interfering signal. Use this mode when you are hunting a known interference.

Set the tracking position to center on noise frequency  


Set the Integrated BW slightly wider than noise   

NOTE – Set BW slightly wider than interference BW

Press the Return tab 

Setting up Max/Min Hold

Press the **Trace** tab

Press the Max Hold button to turn on Max Hold

Press the Min hold button to turn on Min Hold

Recommended – set the hold time to 10-60 seconds

Press the Return tab 

Setting Up the Limit Line

Press the **Limit** tab

Set the limit as needed (ex -120 dBm)

Press the Return tab 



Starting a Recording

Press the Back Arrow  Spectrum Control

Press the  to start recording

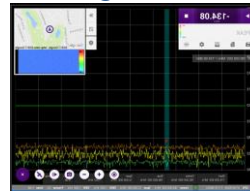
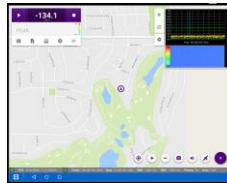
Press the  to stop recording

Press the  button to save the recording

Press the  button to stop the recording

Changing Views

At any time press the  button to change views



Directional Antenna

Description

Connecting the Antenna to the Cell Advisor

Connect the directional antenna as pictured below



Launching Radar Chart

Mode icon



Interference Analyzer

Interference Analyzer

Radar Chart (Soft Key)

Radar Chart

Select Done

Done

Measurement Setup icon



Screen Mode

Full

Map

Calibrating the Antenna Handle

Place Antenna in horizontal position and do not move handle

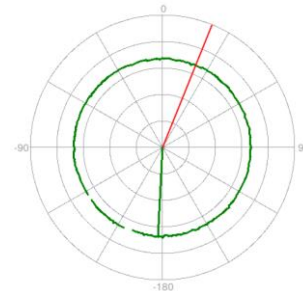
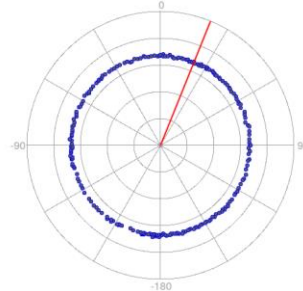
Initialize Antenna Advisor (Under Screen mode) Initialize AntennaAdvisor



AntennaAdvisor Handle is initializing.

Making Initial Sweep

Press the button on the antenna handle and make a 360-degree circle slowly



Measurement Setup icon



Localization

Localization

A GREEN line will show most probable direction of interferer