

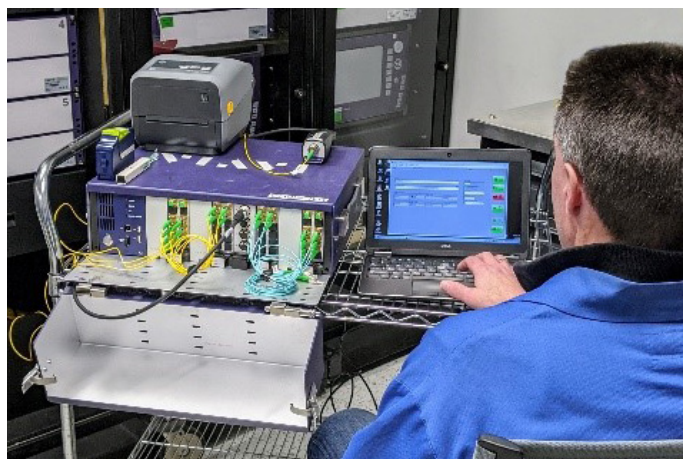
VIAMI

VOA Calibration

A VIAMI VOA is a key component of any Lab or Production test set — protect your investment by ensuring it is always operating at its best. VIAMI provides multiple VOA Calibration Service options designed to align with diverse customer needs. In addition to standard Return to Factory calibration, options also exist for VIAMI to go directly onsite to customer locations thereby maximizing the uptime of these valuable assets. Customers can then further select from various Service Levels associated with the reporting detail they require.

Standards

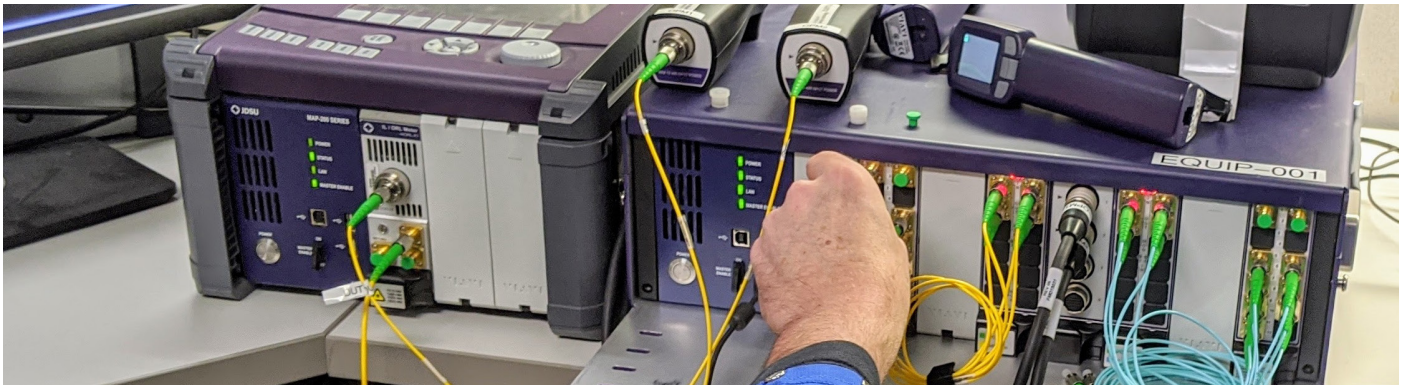
Instruments are calibrated based on general requirements for the competence of calibration and testing laboratories (ISO/IEC 17025:2005) using applicable VIAMI Solutions procedures, IEC 61280-4-1, IEC 61280-4-2 and IEC 62614 guidance. Results are traceable to French National Standards and NIST which are consistent with the recommendations of the General Conference on Weights and Measures (CGPM), or to standards derived from natural constants, or to standards relying on ratio measurements with self-calibrating technique for their calibration. Calibration procedures are VIAMI Solutions developed and to ensure best practices and standards throughout the VIAMI Service Network. Service Reports include document control numbers for processes and procedures.



Overview

A VIAMI VOA is often just one component of an integrated test kit and the potential for downtime associated with a return for calibration can be revenue or schedule impacting. For this reason, returning systems or portions of systems to the factory for calibration is not always an attractive or even a viable alternative. VIAMI now offers Onsite in addition to Return to Factory options that allow customers to select the offering that works best for their needs.

- Conduct a functional test of the system to verify that vital functions perform as expected
- Inspect and clean the optics and optical connections
- Verify measurement accuracy to traceable standards
- Document findings with a report of observations, measurements and actions
- Update calibration dates and/or provide calibration label noting date of calibration and due date for next calibration (after consultation with customer)
- Perform instrument and module maintenance to extend product lifetime
- Perform software updates



Services

Onsite Verification

For customers that are unable to return their product to VIAVI for service, VIAVI offers an onsite validation service. With this option, a VIAVI technician comes directly to the customer site and will perform functional test and (if necessary) calibration including a cert and calibration sticker.

Onsite Calibration

This offers an upgrade to the level of service received for customers opting for onsite services. With the Onsite Calibration, the customer receives all the same services as the Onsite Verification with the addition of a detailed report that identifies as received/final condition of the product as well as the detailed test results for each product tested.

Return to Factory

Return to Factory service is a comprehensive Service option that includes, functional testing, recalibration (if necessary), implementation of necessary engineering changes, software upgrade, calibration sticker/cert and calibration report. This option is available for all currently supported VOA products, mainframes and modules.

Onsite Maintenance

In some cases, minor repairs can be done onsite at the customer location during an onsite calibration or verification engagement. This type of repair could include replacement of damaged adapters or ejector handles, and software updates. For cases where products need to be returned to the Factory for repair, VIAVI personnel can help to ensure that returned products have accurate information to ensure efficient processing.

VOA	Onsite	Factory
Calibration and Verification		
Attenuation Calibration		●
Attenuation Accuracy Verification	●	●
Attenuation Repeatability Verification	●	●
Beam Block Isolation Verification	●	●
Insertion Loss Calibration	●	●
Return Loss Verification		●
PDL Verification (SM Only)		●
Power Monitor Calibration		●
Power Monitor Linearity Verification	●	●
Apply Calibration Sticker	●	●
Provide Calibration Certificate	●	●
Provide Calibration Report	○	●
Maintenance/Repair		
Inspect unit for damage	●	●
Inspect and clean connectors	●	●
Confirm unit operational	●	●
Voltage check		●
FW/SW updates	○	●
Repair of non-functional products		●
Minor repairs	○	●
Cleaning	○	●

● Always included

○ Optional item

VOA Service Table

The following products are currently supported.
For hardware not on the list contact or to obtain additional information, please contact your local VIAVI Services representative.

Applicable Products
MVOA-C1SS0-MXXX-MYY
MVOA-C1DS0-MXXX-MYY
MVOA-C1QS0-MXXX-MYY
MVOA-C1SSM-MXXX-MYY
MVOA-C1DSM-MXXX-MYY
MVOA-C1QSM-MXXX-MYY
MVOA-C1SS1-M100-MYY
MVOA-C1DS1-M100-MYY
MVOA-C1QS1-M100-MYY
MVOA-C1SSE-M100-MYY
MVOA-C1SH0- MXXX-MYY
MVOA-C1SH0- MXXX-MYY
MVOA-C1SHM- MXXX-MYY
MVOA-C1DHM- MXXX-MYY



Contact Us **+1 844 GO VIAVI**
(+1 844 468 4284)

To reach the VIAVI office nearest you,
visit viasolutions.com/contact

© 2020 VIAVI Solutions Inc.
Product specifications and descriptions in this document are subject to change without notice.
voa-calibration-ds-lab-nse-ae
30191255 900 0820